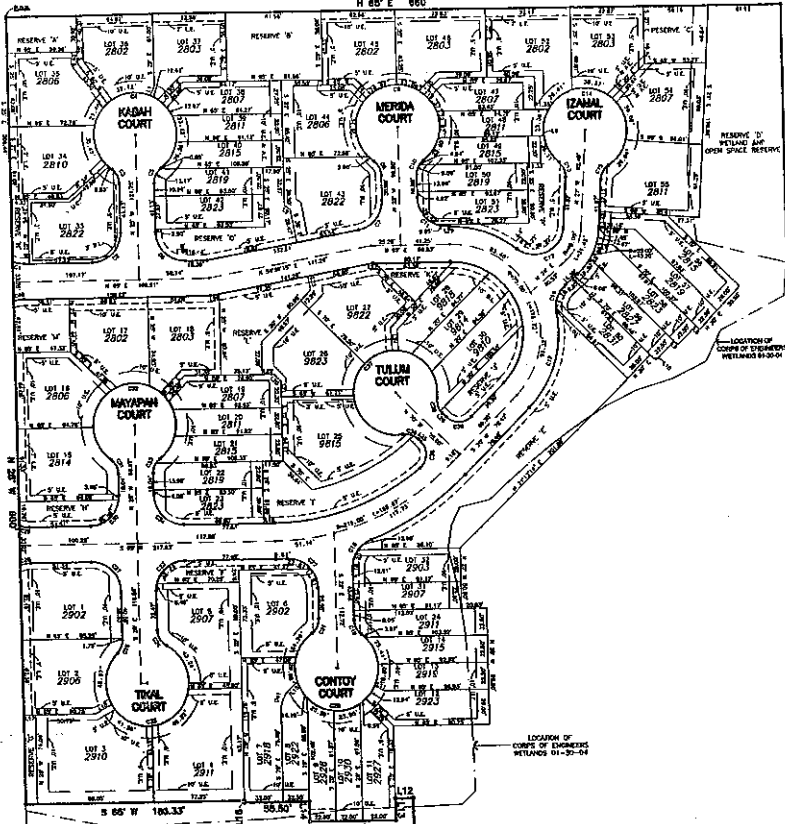


SCHAPER DRIVE.

SYDNOR LANE
(R.O.W. UNDERS)



JAN 2005

SOUTH 1/2
LOT 324
SULLIVAN LAND AND CATTLE
F.C. NO. 019-99-0724

Section One
Trimble & Lindsey
Survey

LINE	DISTANCE	BEARING
L1	6.97'	S 89° 15' 00" W
L2	8.87'	S 89° 15' 00" W
L3	7.97'	S 89° 15' 00" W
L4	10.97'	S 89° 15' 00" W
L5	14.97'	S 89° 15' 00" W
L6	18.97'	S 89° 15' 00" W
L7	22.97'	S 89° 15' 00" W
L8	26.97'	S 89° 15' 00" W
L9	30.97'	S 89° 15' 00" W
L10	34.97'	S 89° 15' 00" W
L11	38.97'	S 89° 15' 00" W
L12	42.97'	S 89° 15' 00" W
L13	46.97'	S 89° 15' 00" W
L14	50.97'	S 89° 15' 00" W
L15	54.97'	S 89° 15' 00" W
L16	58.97'	S 89° 15' 00" W
L17	62.97'	S 89° 15' 00" W
L18	66.97'	S 89° 15' 00" W
L19	70.97'	S 89° 15' 00" W
L20	74.97'	S 89° 15' 00" W
L21	78.97'	S 89° 15' 00" W
L22	82.97'	S 89° 15' 00" W
L23	86.97'	S 89° 15' 00" W
L24	90.97'	S 89° 15' 00" W
L25	94.97'	S 89° 15' 00" W
L26	98.97'	S 89° 15' 00" W
L27	102.97'	S 89° 15' 00" W
L28	106.97'	S 89° 15' 00" W
L29	110.97'	S 89° 15' 00" W
L30	114.97'	S 89° 15' 00" W

LOT	AREA (SQ. FT.)	AREA (ACRES)	LOT	AREA (SQ. FT.)	AREA (ACRES)	RESERVE	AREA (SQ. FT.)	AREA (ACRES)
1	3303	0.12	31	2051	0.05	A	1842	0.04
2	4636	0.11	32	2228	0.06	B	2729	0.11
3	7175	0.16	33	4925	0.11	C	2831	0.06
4	8804	0.15	34	4368	0.10	D	331059	7.6
5	5478	0.12	35	4434	0.10	E	10832	0.24
6	4986	0.10	36	4154	0.10	F	1872	0.04
7	4326	0.10	37	3911	0.09	G	740	0.02
8	2027	0.05	38	2927	0.08	H	1660	0.04
9	2145	0.05	39	2097	0.05	I	4399	0.10
10	2092	0.05	40	2168	0.05	J	1945	0.04
11	2581	0.06	41	2095	0.05	K	1095	0.03
12	2700	0.06	42	1587	0.04	L	3763	0.09
13	2095	0.05	43	2047	0.12	M	2101	0.05
14	2166	0.06	44	4175	0.10	N	772	0.02
15	4785	0.11	45	4081	0.09	O	3623	0.08
16	4268	0.10	46	4895	0.11	P	3122	0.07
17	4804	0.10	47	2415	0.06			
18	4393	0.10	48	2012	0.05			
19	2580	0.06	49	2076	0.05			
20	2021	0.05	50	2109	0.05			
21	2213	0.05	51	2024	0.05			
22	2097	0.05	52	4684	0.11			
23	2005	0.05	53	4191	0.10			
24	2499	0.06	54	4028	0.10			
25	2297	0.13	55	4914	0.11			
26	4848	0.10	56	2168	0.07			
27	4702	0.11	57	2587	0.06			
28	2297	0.06	58	2360	0.05			
29	2119	0.05	59	2211	0.05			
30	2756	0.06	60	2536	0.06			

1" = 50' 1/2" 1/2" 1/2" 1/2"

- Notes:
- 1) According to the FEMA Flood Insurance Rate Map No. 435489-0023 E, dated December 6, 2002 this property is located within Zone AE with a base flood elevation of 13.00 feet.
 - 2) All bearings are shown herein are based on the Centeline of 103rd Street.
 - 3) U.E. Indicates Utility Easement.
 - 4) A.E. Indicates Access Easement.
 - 5) L.E. Indicates Landscape Easement.
 - 6) R.O.W. Indicates Right-of-Way.
 - 7) Reserve's A, B, C, F, G, H, I, J, K, L, M, N and O are common area reserves.
 - 8) Reserve's D and E are reserved for Wetland and Open space.

REPLAT OF CAMPECHE SHORES

A SUBDIVISION OUT OF AND A PART OF
LOTS 313 AND 324 OF
TRIMBLE AND LINDSEY SURVEY SECTION 1
CITY AND COUNTY OF GALVESTON, TEXAS

15.03 ACRES
60 LOTS 16 RESERVES

April 2004

CURVE	RADIUS	DELTA	ARC	TANGENT	BEARING	CHORD
C1	25.00'	327°54'	10.07'	8.10'	S 280°17' W	50.17'
C2	25.00'	30°46'00"	36.27'	25.00'	N 89°58'00" E	25.00'
C3	15.00'	323°21'	14.90'	7.47'	S 89°58'00" E	14.90'
C4	20.00'	280°00'	12.57'	12.57'	N 89°58'00" E	12.57'
C5	15.00'	42°32'30"	14.02'	7.87'	S 89°58'00" E	14.02'
C6	25.00'	109°00'	36.27'	25.00'	S 89°58'00" E	36.27'
C7	25.00'	174°11'	36.27'	25.00'	S 89°58'00" E	36.27'
C8	25.00'	107°00'	14.02'	7.87'	S 89°58'00" E	14.02'
C9	15.00'	174°11'	14.02'	7.87'	S 89°58'00" E	14.02'
C10	25.00'	109°00'	36.27'	25.00'	S 89°58'00" E	36.27'
C11	25.00'	109°00'	36.27'	25.00'	S 89°58'00" E	36.27'
C12	15.00'	327°54'	10.07'	8.10'	N 17°48'00" W	10.07'
C13	25.00'	280°00'	36.27'	25.00'	S 89°58'00" E	36.27'
C14	25.00'	109°00'	36.27'	25.00'	S 89°58'00" E	36.27'
C15	25.00'	109°00'	36.27'	25.00'	S 89°58'00" E	36.27'
C16	25.00'	109°00'	36.27'	25.00'	S 89°58'00" E	36.27'
C17	25.00'	109°00'	36.27'	25.00'	S 89°58'00" E	36.27'
C18	25.00'	109°00'	36.27'	25.00'	S 89°58'00" E	36.27'
C19	25.00'	109°00'	36.27'	25.00'	S 89°58'00" E	36.27'
C20	25.00'	109°00'	36.27'	25.00'	S 89°58'00" E	36.27'
C21	25.00'	109°00'	36.27'	25.00'	S 89°58'00" E	36.27'
C22	25.00'	109°00'	36.27'	25.00'	S 89°58'00" E	36.27'
C23	25.00'	109°00'	36.27'	25.00'	S 89°58'00" E	36.27'
C24	25.00'	109°00'	36.27'	25.00'	S 89°58'00" E	36.27'
C25	25.00'	109°00'	36.27'	25.00'	S 89°58'00" E	36.27'
C26	25.00'	109°00'	36.27'	25.00'	S 89°58'00" E	36.27'
C27	25.00'	109°00'	36.27'	25.00'	S 89°58'00" E	36.27'
C28	25.00'	109°00'	36.27'	25.00'	S 89°58'00" E	36.27'
C29	25.00'	109°00'	36.27'	25.00'	S 89°58'00" E	36.27'
C30	25.00'	109°00'	36.27'	25.00'	S 89°58'00" E	36.27'
C31	25.00'	109°00'	36.27'	25.00'	S 89°58'00" E	36.27'
C32	25.00'	109°00'	36.27'	25.00'	S 89°58'00" E	36.27'
C33	25.00'	109°00'	36.27'	25.00'	S 89°58'00" E	36.27'
C34	25.00'	109°00'	36.27'	25.00'	S 89°58'00" E	36.27'
C35	25.00'	109°00'	36.27'	25.00'	S 89°58'00" E	36.27'
C36	25.00'	109°00'	36.27'	25.00'	S 89°58'00" E	36.27'
C37	25.00'	109°00'	36.27'	25.00'	S 89°58'00" E	36.27'
C38	25.00'	109°00'	36.27'	25.00'	S 89°58'00" E	36.27'
C39	25.00'	109°00'	36.27'	25.00'	S 89°58'00" E	36.27'
C40	25.00'	109°00'	36.27'	25.00'	S 89°58'00" E	36.27'
C41	25.00'	109°00'	36.27'	25.00'	S 89°58'00" E	36.27'
C42	25.00'	109°00'	36.27'	25.00'	S 89°58'00" E	36.27'
C43	25.00'	109°00'	36.27'	25.00'	S 89°58'00" E	36.27'
C44	25.00'	109°00'	36.27'	25.00'	S 89°58'00" E	36.27'
C45	25.00'	109°00'	36.27'	25.00'	S 89°58'00" E	36.27'
C46	25.00'	109°00'	36.27'	25.00'	S 89°58'00" E	36.27'
C47	25.00'	109°00'	36.27'	25.00'	S 89°58'00" E	36.27'
C48	25.00'	109°00'	36.27'	25.00'	S 89°58'00" E	36.27'
C49	25.00'	109°00'	36.27'	25.00'	S 89°58'00" E	36.27'
C50	25.00'	109°00'	36.27'	25.00'	S 89°58'00" E	36.27'
C51	25.00'	109°00'	36.27'	25.00'	S 89°58'00" E	36.27'
C52	25.00'	109°00'	36.27'	25.00'	S 89°58'00" E	36.27'
C53	25.00'	109°00'	36.27'	25.00'	S 89°58'00" E	36.27'
C54	25.00'	109°00'	36.27'	25.00'	S 89°58'00" E	36.27'
C55	25.00'	109°00'	36.27'	25.00'	S 89°58'00" E	36.27'
C56	25.00'	109°00'	36.27'	25.00'	S 89°58'00" E	36.27'
C57	25.00'	109°00'	36.27'	25.00'	S 89°58'00" E	36.27'
C58	25.00'	109°00'	36.27'	25.00'	S 89°58'00" E	36.27'
C59	25.00'	109°00'	36.27'	25.00'	S 89°58'00" E	36.27'
C60	25.00'	109°00'	36.27'	25.00'	S 89°58'00" E	36.27'
C61	25.00'	109°00'	36.27'	25.00'	S 89°58'00" E	36.27'
C62	25.00'	109°00'	36.27'	25.00'	S 89°58'00" E	36.27'
C63	25.00'	109°00'	36.27'	25.00'	S 89°58'00" E	36.27'
C64	25.00'	109°00'	36.27'	25.00'	S 89°58'00" E	36.27'
C65	25.00'	109°00'	36.27'	25.00'	S 89°58'00" E	36.27'
C66	25.00'	109°00'	36.27'	25.00'	S 89°58'00" E	36.27'
C67	25.00'	109°00'	36.27'	25.00'	S 89°58'00" E	36.27'
C68	25.00'	109°00'	36.27'	25.00'	S 89°58'00" E	36.27'
C69	25.00'	109°00'	36.27'	25.00'	S 89°58'00" E	36.27'
C70	25.00'	109°00'	36.27'	25.00'	S 89°58'00" E	36.27'

AVENUE V 1/2
(R.O.W. UNDERS)

